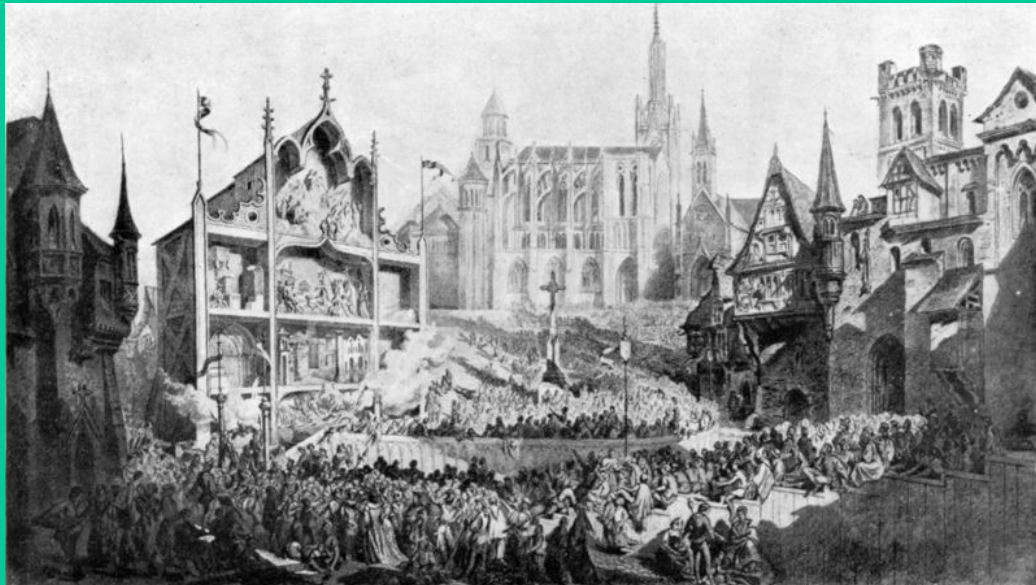
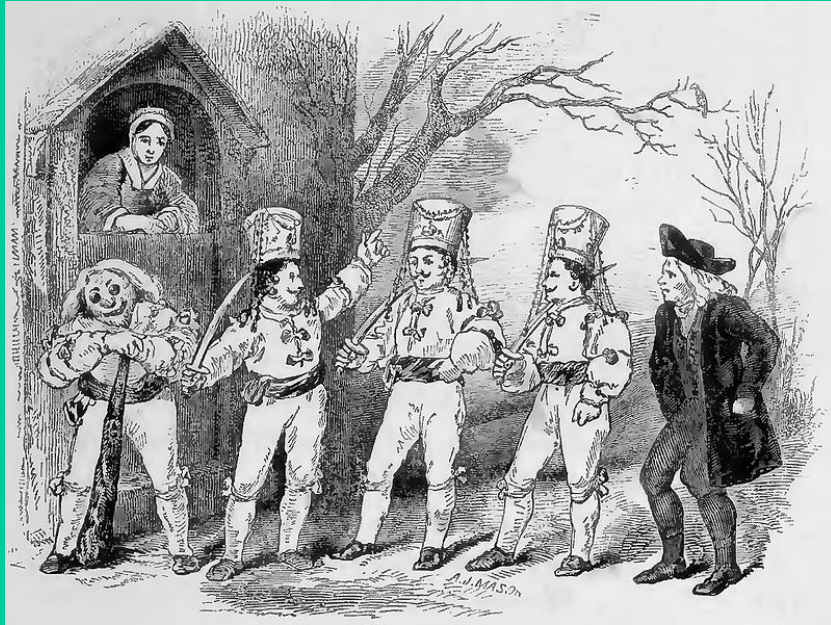


Medieval Theatre

History



- <https://www.youtube.com/watch?v=kX0jHv05FYM> Crash Course Theatre, Liturgical Drama, early Medieval



- **Mumming**: early Medieval folk play, gift giving ceremony



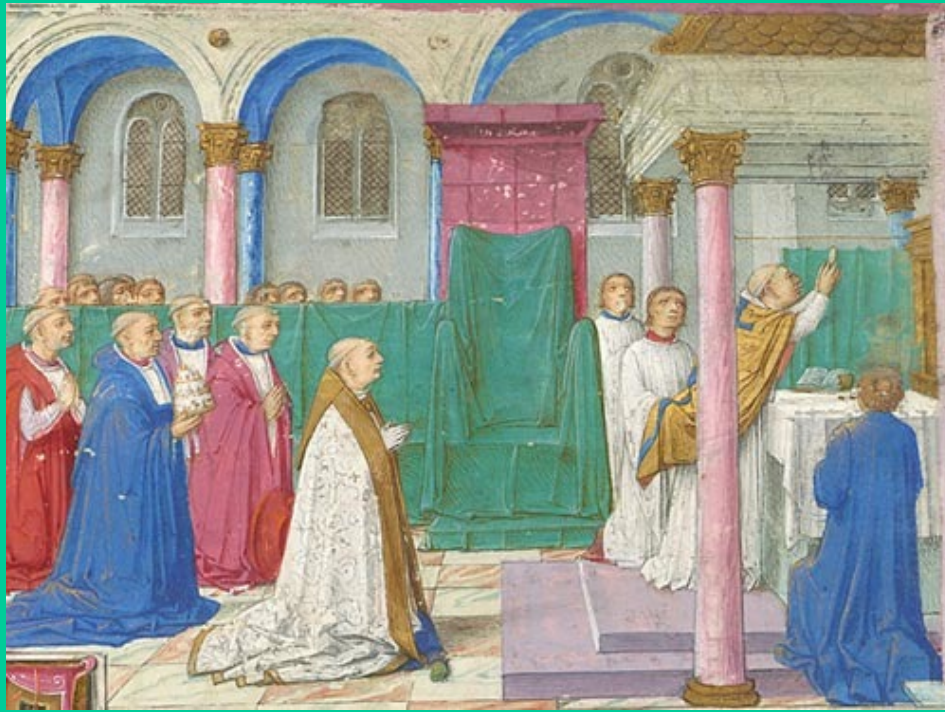


Minstrel:

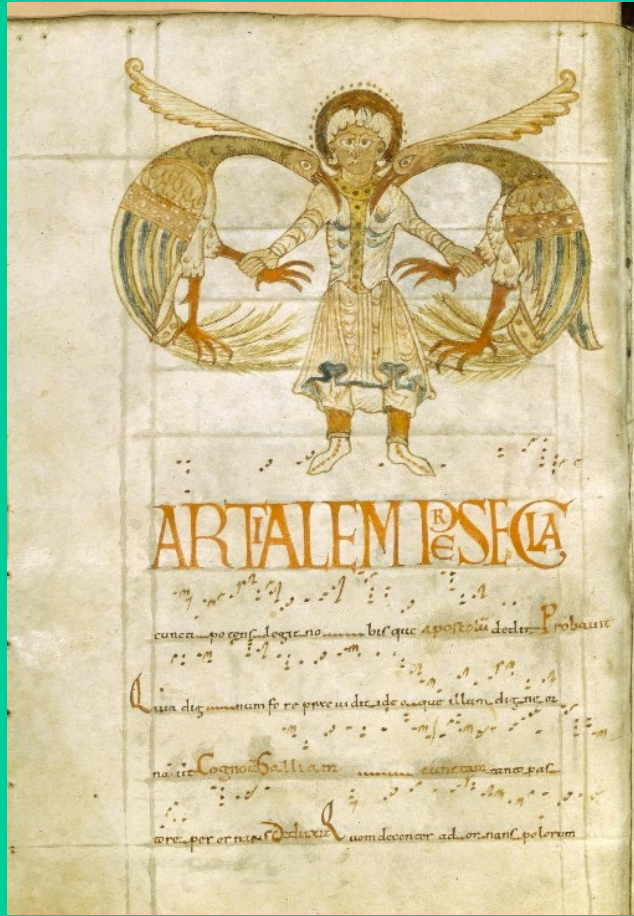
traveling musician

(bard, troubadour)





Eucharist: holy communion,
the taking of the blood and body
of Christ in the church.

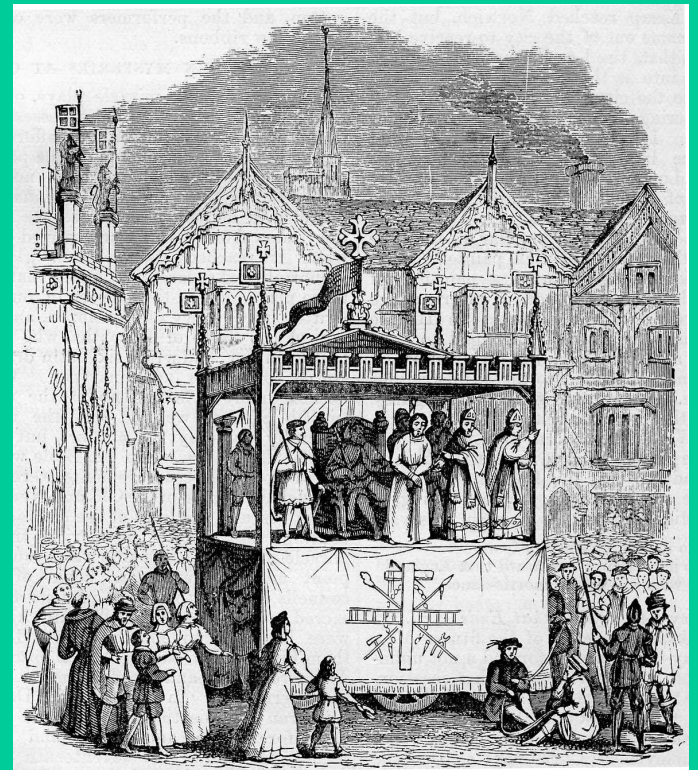


Trope: Singing or responsive reading in the early church.

- During the early Medieval Period, the Church banned theatrical performances.
- Latin was official language of the church, all church messages and sermons were in Latin
- Common people could not speak Latin
- Priests & Clergy began to act out messages so the common people would understand them.

5 types of Medieval Religious Plays

- Mystery Play
- Cycle Play
- Passion Play
- Miracle Play
- Morality Play



Mystery Play

Early religious play,
dramatized stories
from the Bible.



Cycle Play

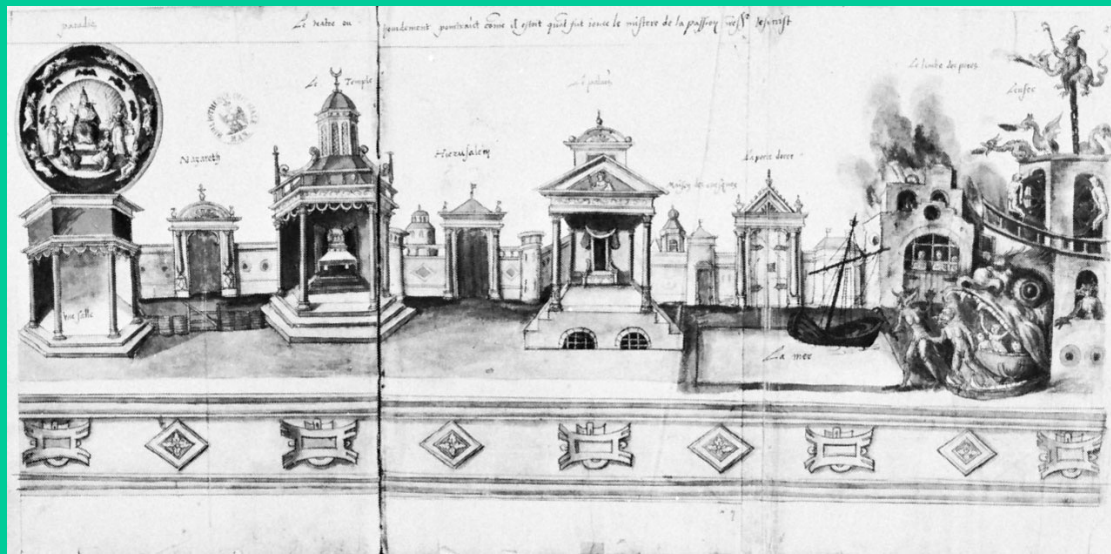
Play with multiple scenes
and multiple stages, all at
the same time

(simultaneous staging)



Early Cycle Plays

- Inside churches
- Stages were stationary
- Audience would move from stage to stage
- ‘Haunted House’



Later Cycle Plays

- Performed Outside
- Actors on moving stages
- Audience didn't move
 - 'Parade Style'



Pageant Wagon

Horse drawn carts
that were stages for
later cycle plays





Guild

Medieval trade Unions that sponsored cycle plays



Corpus Christi

Festival that became known for the presentation of cycle plays.

Passion Play

Play that dramatizes the
'Passion of Jesus Christ'
(trial, suffering, death)



Miracle Play

Play based on
the life of a
saint.





Morality Play

An 'allegory' play that teaches a lesson

Seven Deadly Sins

PLEGGAS

- Pride
- Lust
- Envy
- Greed
- Gluttony
- Anger (Wrath)
- Sloth



Seven Virtues

*(The Chocolate Dancing Panda
Knows How to Party)*

- Temperance
 - Charity
 - Diligence
 - Patience
 - Kindness
 - Humility
 - Purity



Here begynneth a treatyse how þe
fader of heuen sendeth dethe to so-
mon every creature to come and
gyue a counte of theyr lyues in
this worlde/and is in maner
of a moꝛall playe.



Everyman

Most famous
Morality Play

- <https://www.youtube.com/watch?v=5VI3qcSuUlk>
- (Crash Course Mystery/Cycle Play)



Hrosvitha

German Nun,
first known female
playwright.

Sacred:

Based on religion
or worship



Secular

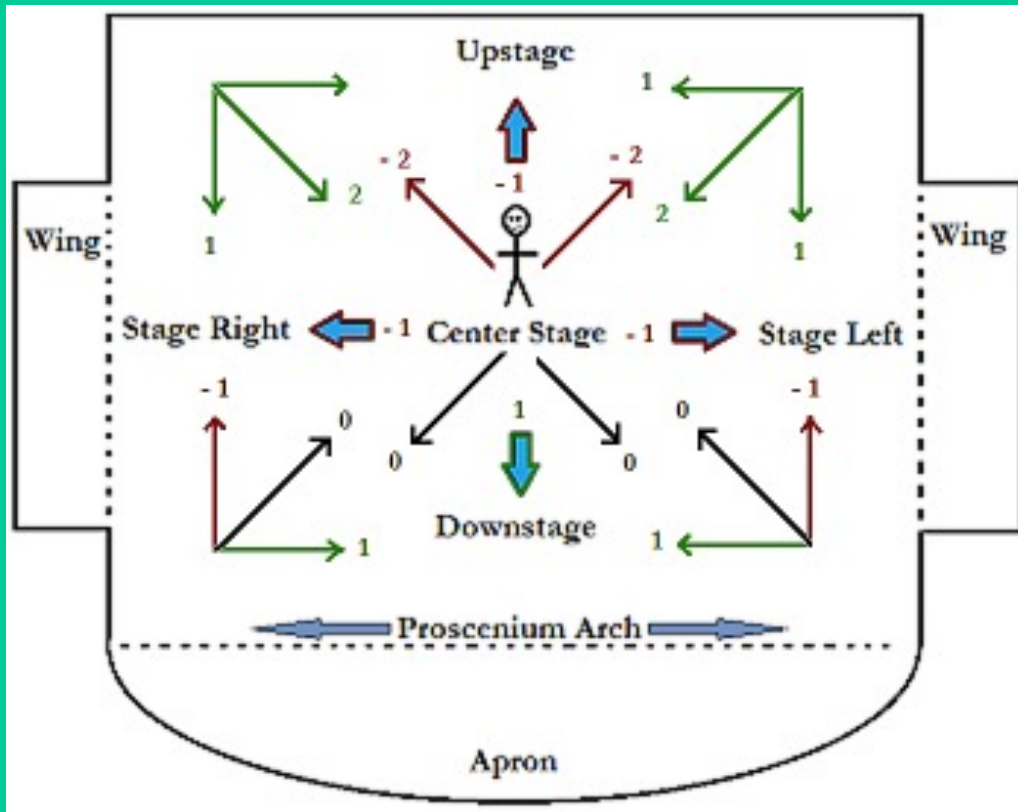
Not based on
religion or
worship

'of the world'



Farce: Popular secular drama, dealing with infidelity and lying





Blocking the actor's movement and actions on stage



Cheating out: turning your body partially toward the audience on stage



Curtain Call: taking a bow at the end of a performance